

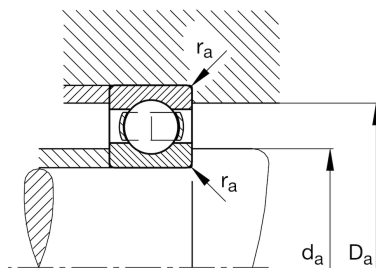
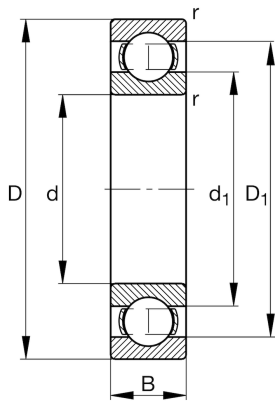
FAG

16056-M

Deep groove ball bearing

Schaeffler ID:
0167013800000Deep groove ball bearing 160..-M, single
row, solid brass cage

Technical information

**Main Dimensions & Performance Data**

d	280 mm	Bore diameter
D	420 mm	Outside diameter
B	44 mm	Width
C_r	243.000 N	Basic dynamic load rating, radial
C_{0r}	330.000 N	Basic static load rating, radial
C_{ur}	10.400 N	Fatigue load limit, radial
n_G	2.700 1/min	Limiting speed
n_{gr}	1.800 1/min	Reference speed
	23,2 kg	Weight

Dimensions

r_{min}	3 mm	Minimum chamfer dimension
D_1	370,6 mm	Shoulder diameter outer ring
d_1	329,9 mm	Shoulder diameter inner ring

Mounting dimensions

$d_{a min}$	292,4 mm	Minimum diameter shaft shoulder
$D_{a max}$	407,6 mm	Maximum diameter of housing shoulder
$r_{a max}$	2,5 mm	Maximum fillet radius

Calculation factors

f_0	16,5	Calculation factor
-------	------	--------------------

Temperature range

T_{min}	-30 °C	Operating temperature min.
T_{max}	200 °C	Operating temperature max.